



# TER Cleaning Formulations with NOVOTEC® CB800

4/26/2024

**GELITA**  
Improving Quality of Life

## Composition of the glass cleaner

### Cleaning Formulation AC 425N

Ingredient	Chemical Description	Content
Deionized water		96.3 %
Carephos N (ICL)	Sodium Polyphosphate	0.2 %
AC 425N (Soho Aneco)	Coco Glucoside	1.0 %
NOVOTEC® CB800 (Gelita AG)	Gelatin Hydrolyzate	1.0 %
Ethanol	Ethanol	1.0 %
Phenoxyethanol	Phenoxyethanol	0.5 %

### Cleaning Formulation AEO-7

Ingredient	Chemical Description	Content
Deionized water		96.8 %
Carephos N (ICL)	Sodium Polyphosphate	0.2 %
Surfant AEO-7 (Jiahua)	Laureth-7	0.5 %
NOVOTEC® CB800 (Gelita AG)	Gelatin Hydrolyzate	1.0 %
Ethanol	Ethanol	1.0 %
Phenoxyethanol	Phenoxyethanol	0.5 %

Set pH-value (7.50 – 8.00) with Sodium Hydroxide 10%.

Comparison with a second sample formulation where NOVOTEC® CB800 is replaced by DI water

## Washability test

# Test method – GELITA internal glass cleaner method

### **Test soil:**

*Permanent Marker*

### **Washability Test:**

- *Towels (Wecovi 02010100) are cut to 13x10cm*
- *Measurement takes place without support weight*
- *Wiping speed 20 strokes / minute*
- *A Glass tile is cleaned twice: first with hot water, second with EtOH*
- *Precleaning Step: The Cleaner with/without NOVOTEC® CB800 (5ml each) is applied in one cleaning cycle (1 min) and dried with a blow dryer*
- *Soiling Step: Test soil (permanent marker) is applied and dried with a blow dryer*
- *Cleaning Step: Cleaner with/without NOVOTEC® CB800 (5ml each) is again applied in one cycle (1 min). The Cleaning Results are documented with pictures during (first visible cleaning) and after the cycle (final result).*

### **Instrument:**

*TQC Sheen Scrub Abrasion and Washability Tester*



## Results of the application tests for the different samples

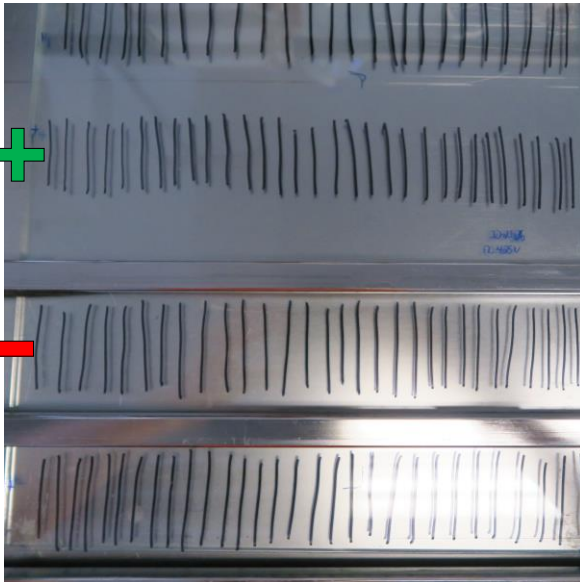
*Pictures were taken before and after completion of the experiments (20 strokes)*

*In case significant changes were observed before completing of the experiments additional pictures were taken*



# Cleaning Formulation AC 425N

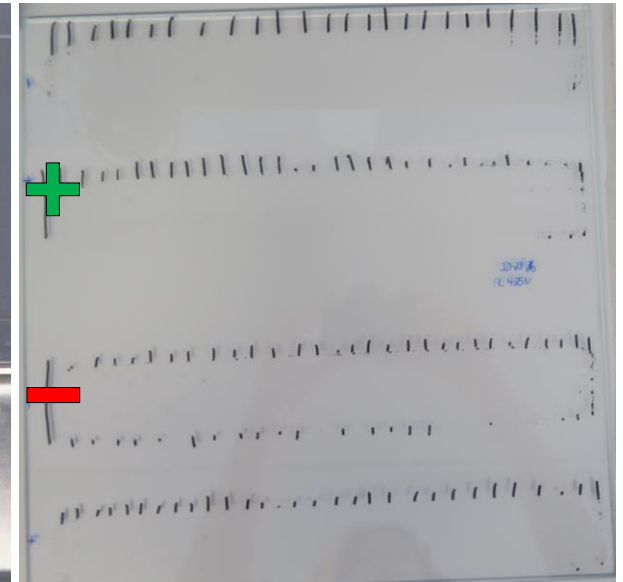
1) After precleaning and soiling



2) After 7 strokes



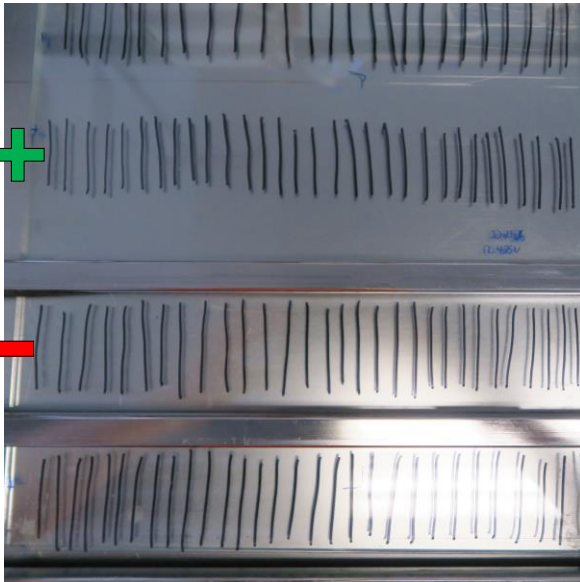
3) After cleaning (full set of 20 strokes)



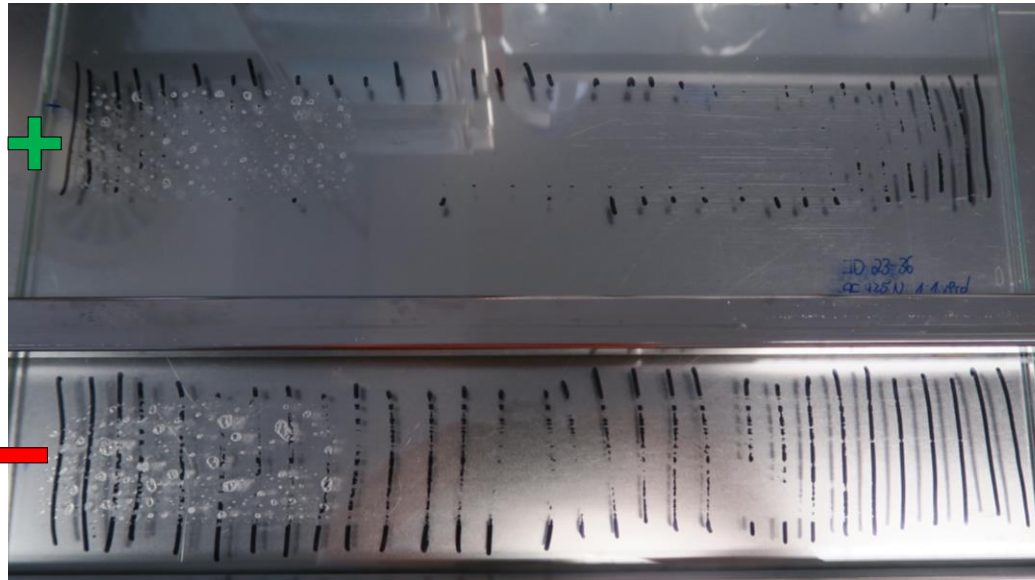
+ With NOVOTEC® CB800  
- Without NOVOTEC® CB800

# Cleaning Formulation AC 425N 1:1 diluted with water

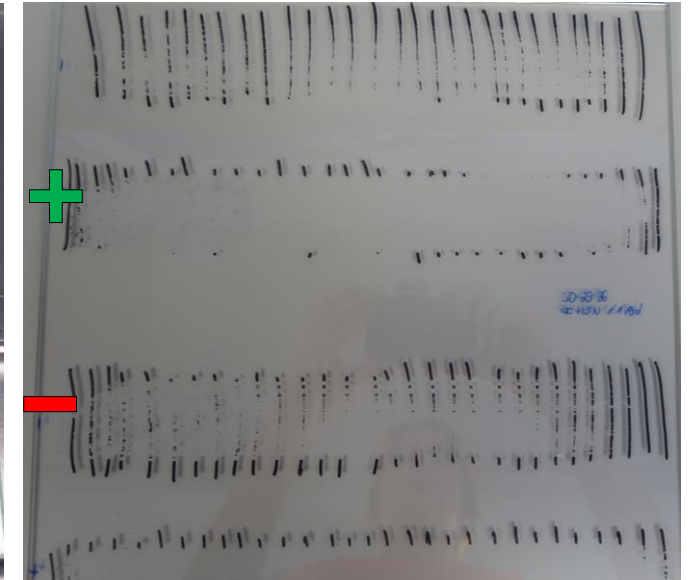
1) After precleaning and soiling



2) After 5 strokes



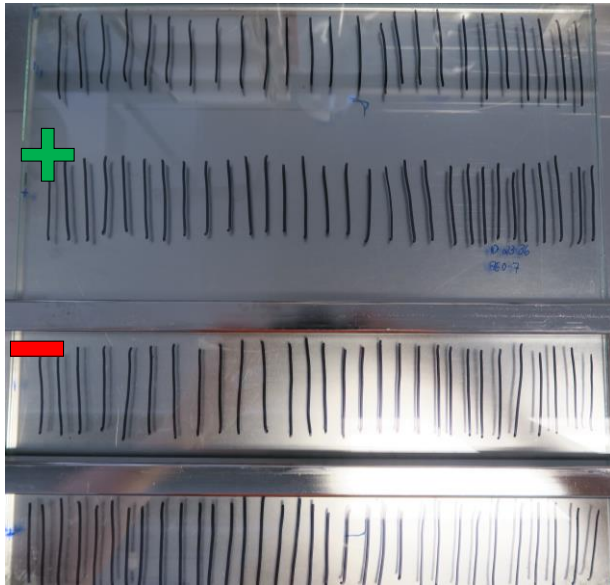
3) After cleaning (full set of 20 strokes)



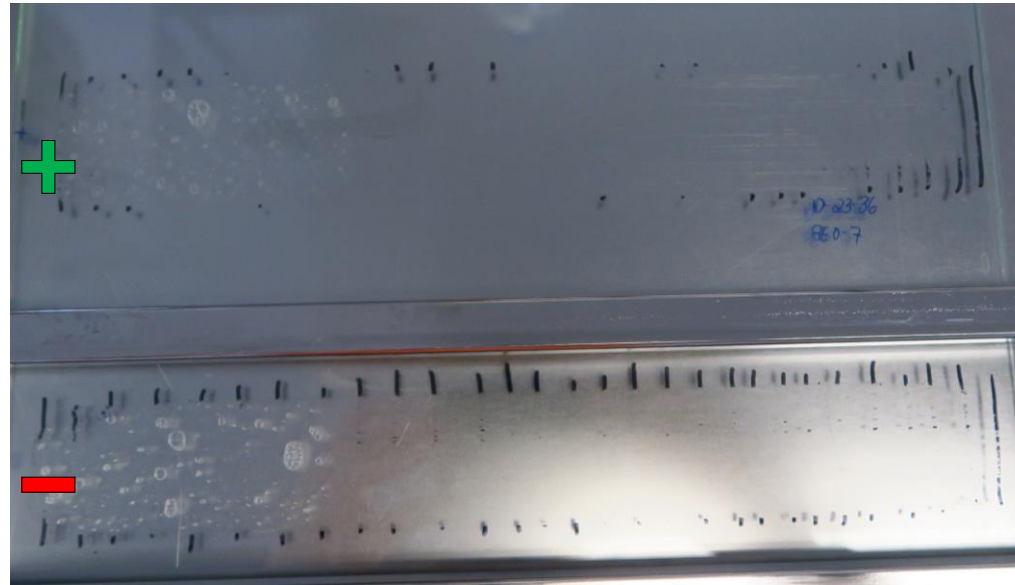
+ With NOVOTEC® CB800  
- Without NOVOTEC® CB800

# Cleaning Formulation AEO-7

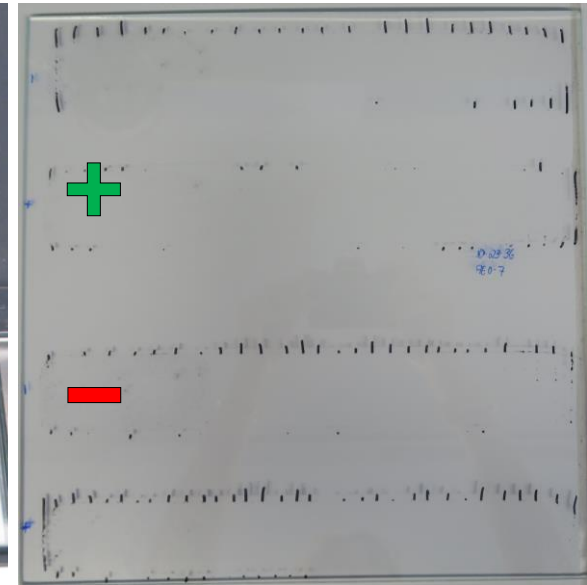
1) After precleaning and soiling



2) After 7 strokes



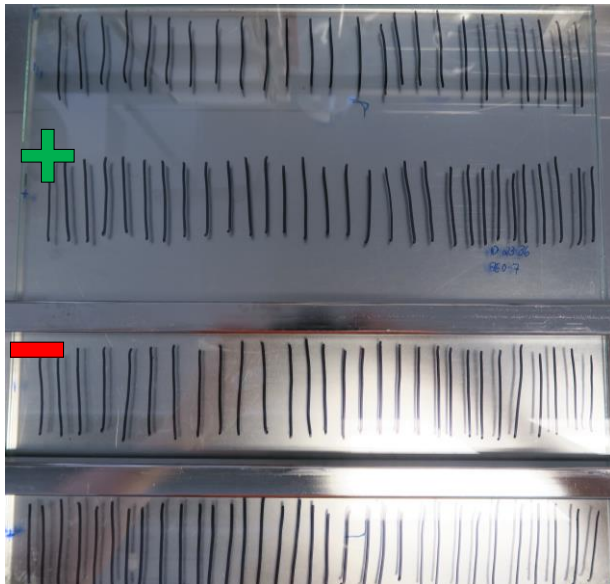
3) After cleaning (full set of 20 strokes)



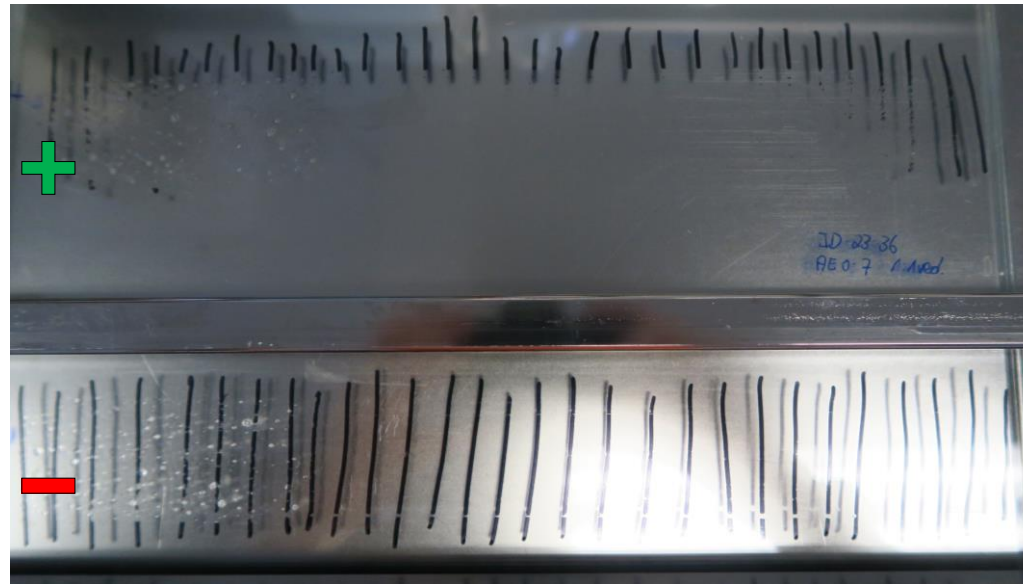
+ With NOVOTEC® CB800  
- Without NOVOTEC® CB800

# Cleaning Formulation AEO-7 1:1 diluted with water

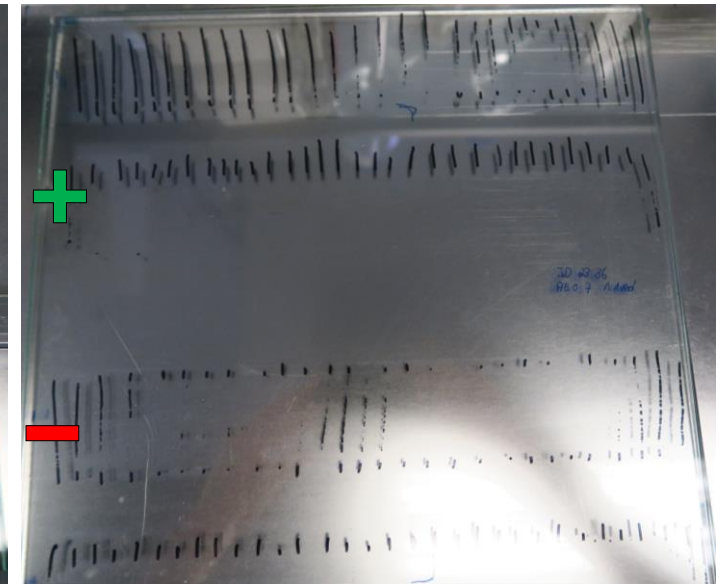
1) After precleaning and soiling



2) After 5 strokes



3) After cleaning (full set of 20 strokes)



+ With NOVOTEC® CB800  
- Without NOVOTEC® CB800



## Composition of the bath cleaner

### Cleaning Formulation AC 425N

Ingredient	Chemical Description	Content
Deionized water		93.0 %
AC 425N (Soho Aneco)	Coco Glucoside	5.5 %
NOVOTEC® CB800 (Gelita AG)	Gelatin Hydrolyzate	1.0 %
Phenoxyethanol	Phenoxyethanol	0.5 %

### Cleaning Formulation AEO-7

Ingredient	Chemical Description	Content
Deionized water		95.75 %
Surfant AEO-7 (Jiahua)	Laureth-7	2.75 %
NOVOTEC® CB800 (Gelita AG)	Gelatin Hydrolyzate	1.0 %
Phenoxyethanol	Phenoxyethanol	0.5 %

Set pH-value (4.00 – 4.50) with Citric Acid 10%.

Comparison with a second sample formulation where NOVOTEC® CB800 is replaced by DI water

## Washability test

# Test method – modified IKW all-purpose cleaner method

### **Test soil:**

75% peanut oil (Mazola)

23% kaolin

2% carbon black

### **Method similar to IKW method all-purpose cleaner:**

- Floor tile (Villeroy & Boch 3135 30x30cm) is cleaned with EtOH
- Cleaner sample is applied by wiping speed 20 strokes / minute
- Dirt is applied on an area of 8x26cm by screen printing
- Drying at 100° C 24h
- Conditioning 24h at RT
- Towels (Wecovi 02010100) are cut to 13x10cm
- The cloths are fixed in the multi-track wiper and wetted with 5ml of the cleaner sample
- Measurement takes place without support weight
- Wiping speed 20 strokes / minute

### **Instrument:**

TQC Sheen Scrub Abrasion and Washability Tester



## Results of the application tests for the different samples

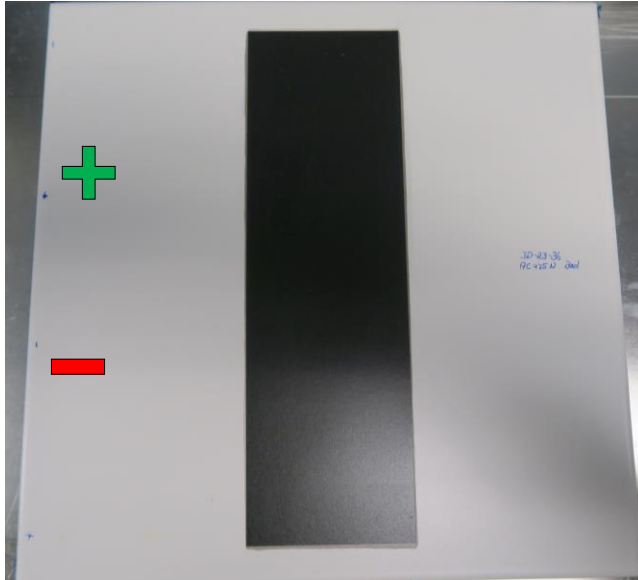
*Pictures were taken before and after completion of the experiments (20 strokes)*

*In case significant changes were observed before completing of the experiments additional pictures were taken*

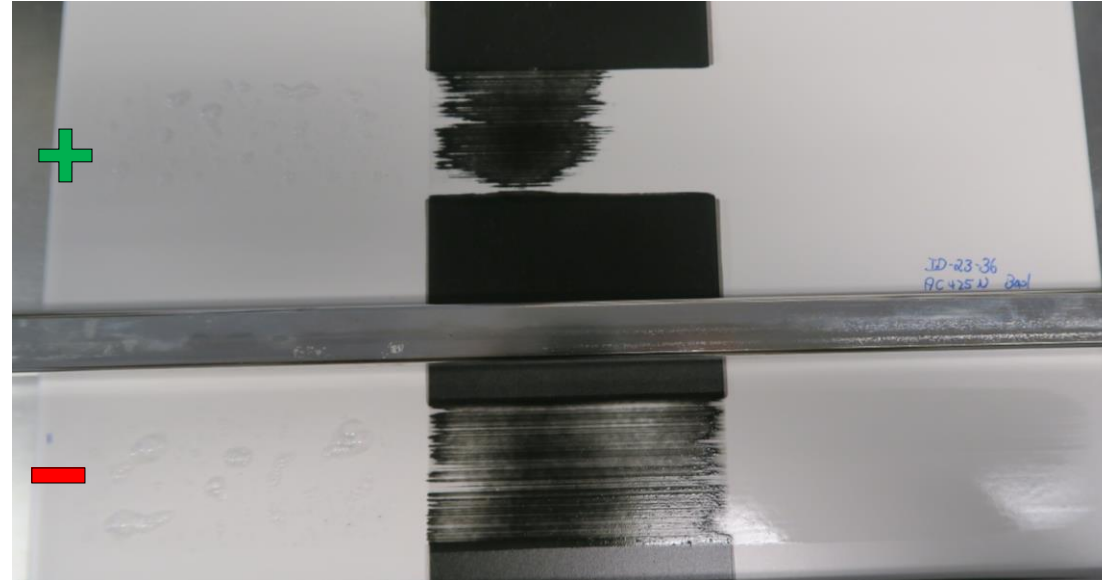


# Cleaning Formulation AC 425N

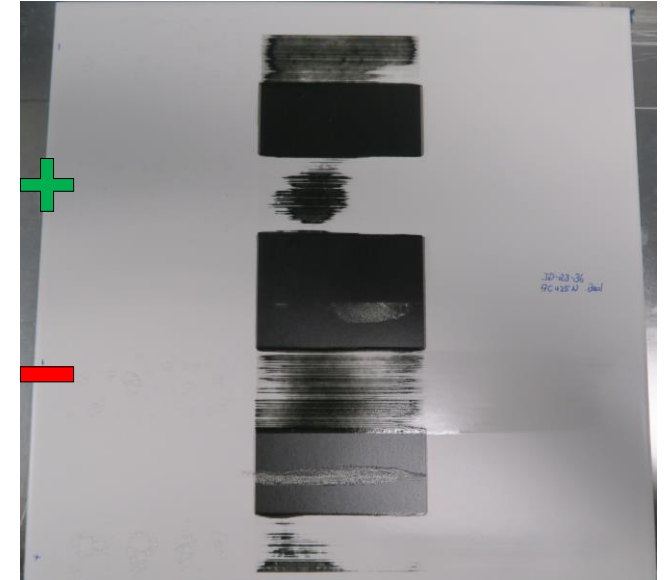
1) After precleaning and soiling



2) After 10 strokes



3) After cleaning (full set of 20 strokes)



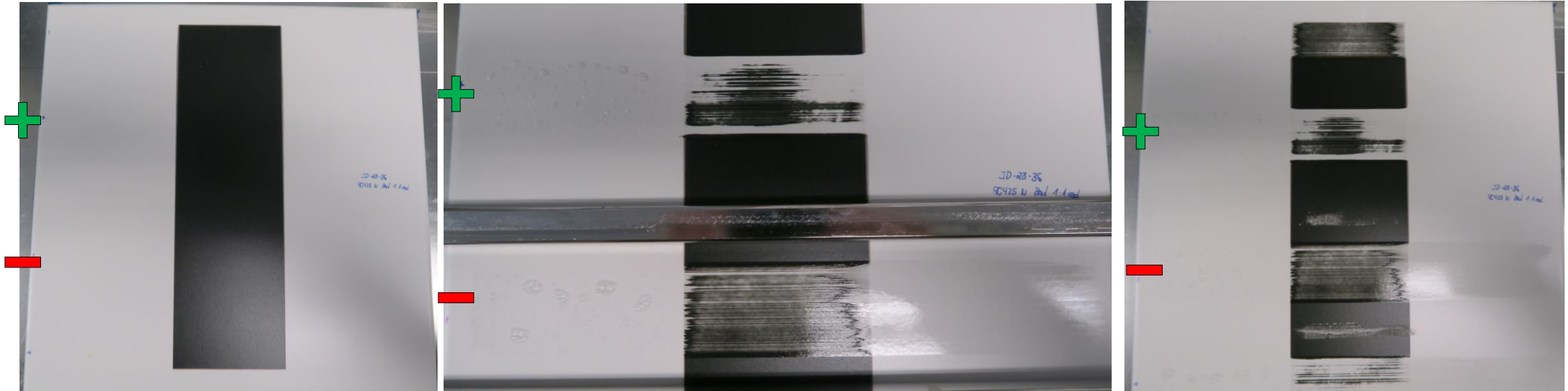
+ With NOVOTEC® CB800  
- Without NOVOTEC® CB800

# Cleaning Formulation AC 425N 1:1 diluted with water

1) After precleaning and soiling

2) After 17 strokes

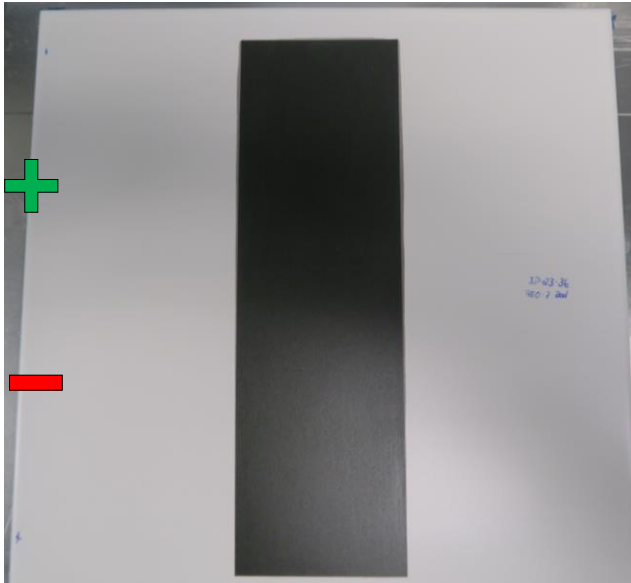
3) After cleaning (full set of 20 strokes)



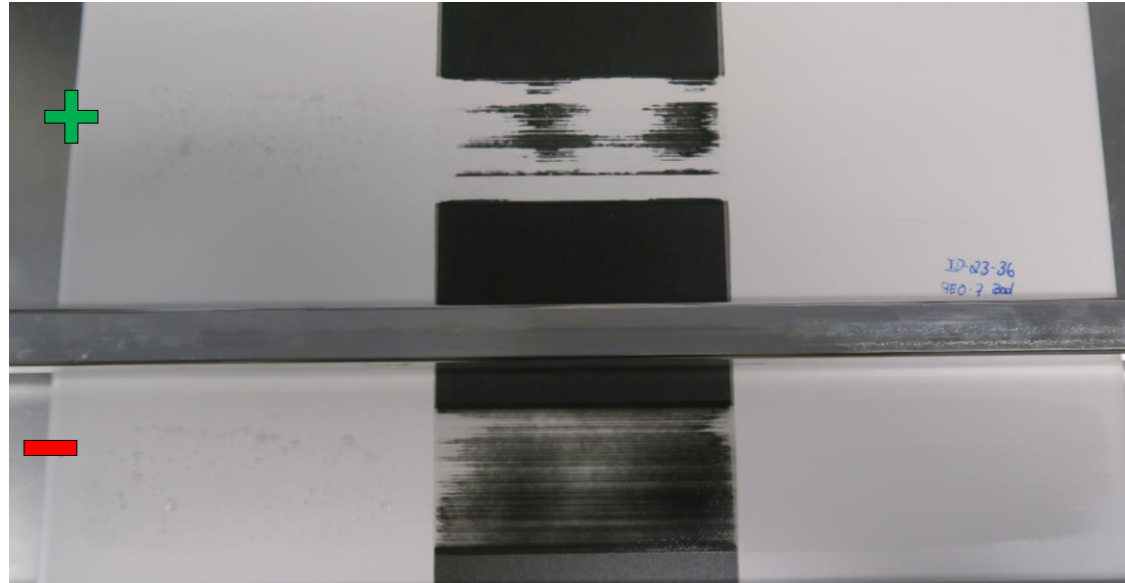
+ With NOVOTEC® CB800  
- Without NOVOTEC® CB800

# Cleaning Formulation AEO-7

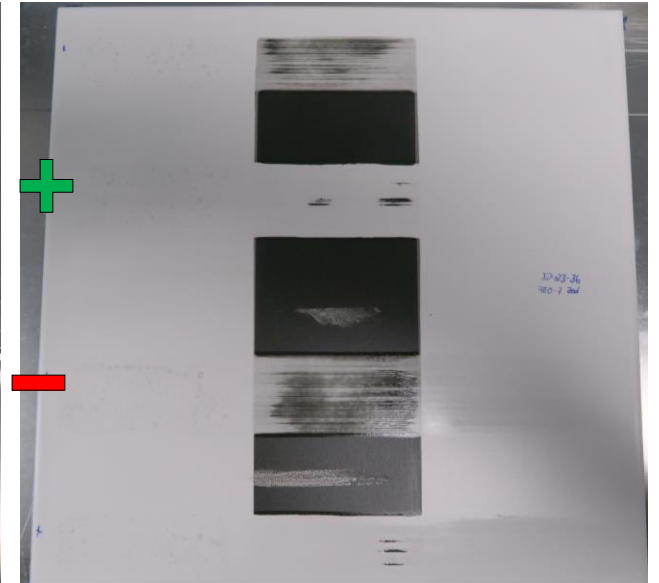
1) After precleaning and soiling



2) After 11 strokes



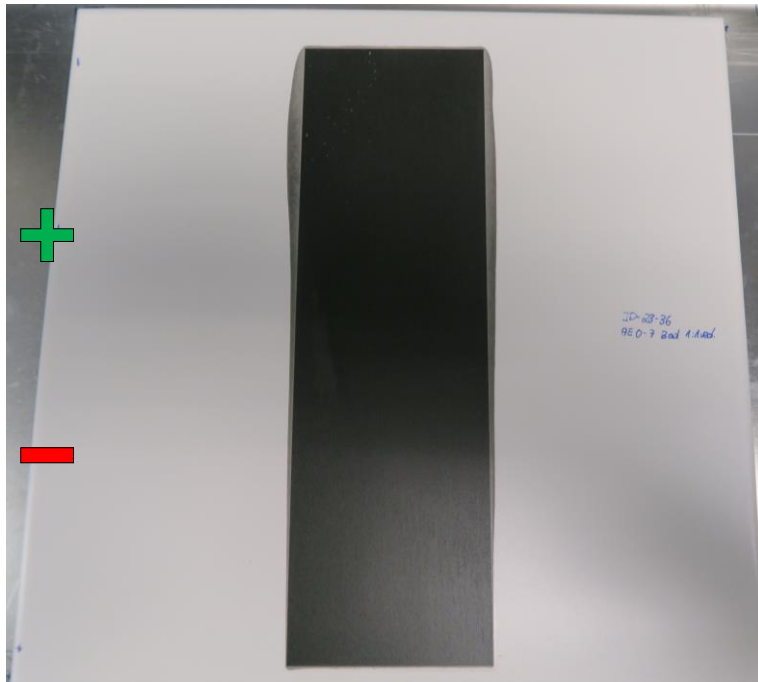
3) After cleaning (full set of 20 strokes)



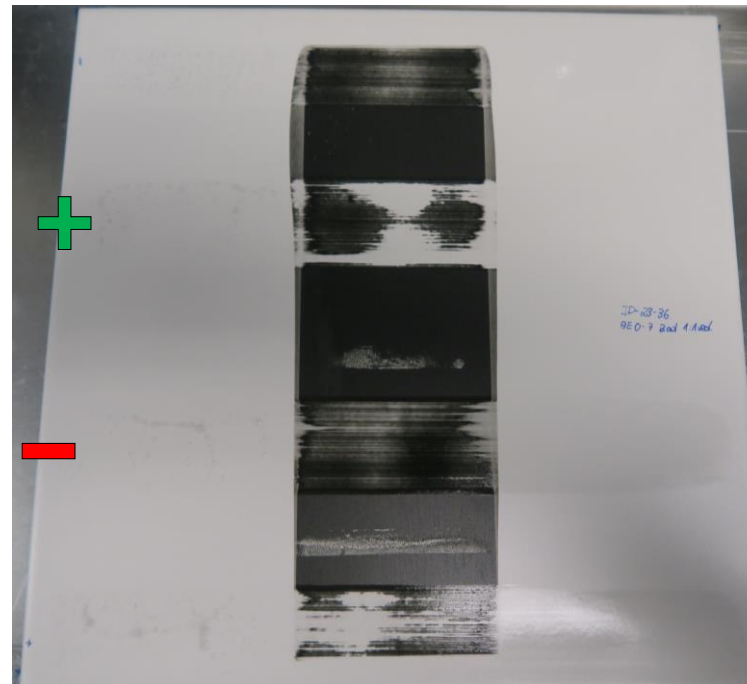
+ With NOVOTEC® CB800  
- Without NOVOTEC® CB800

# Cleaning Formulation AEO-7 1:1 diluted with water

1) After precleaning and soiling



2) After cleaning (full set of 20 strokes)



+ With NOVOTEC® CB800  
- Without NOVOTEC® CB800

# Thank you!



**Contact**

Firstname Surname

Phone: +49 (0)9621 66 - xxxx

Fax: +49 (0)9621 66 - 3xxxx

E-mail: firstname.surname@gelita.com





# Annexes